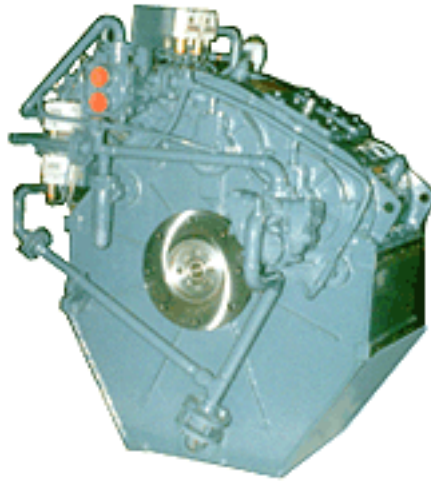
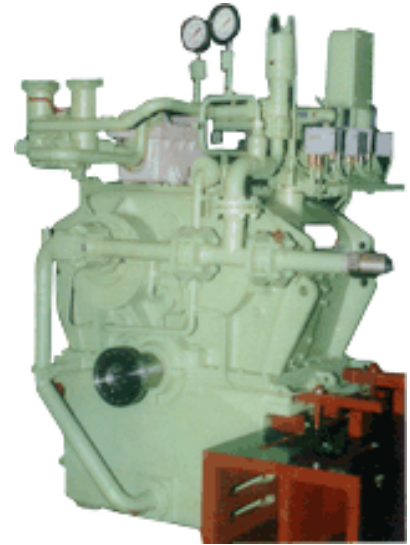


## Marine Gear System (AWS 40 & AWSF 80)

Elecon- Renk AWS type reversing gear units of standard design are available in sizes ranging from 100 KW to 3800 KW and reduction ratios ranging from 1.6 to 7, suitable for propeller thrust of 15kN to 230 kN. These are equipped with two multi-disc clutches for engagement, disengagement as well as reversing of fixed pitch propeller.



AWS 40 : vertically offset parallel shaft arrangement



AWSF 80 : co-axial shaft arrangement

These gear units are mainly used in vessels of various types such sea-going, harbour tugs, fishing vessels, pusher tugs, life-saving boats, pilot vessels, ferries, yachts, etc.

The efficiency of these gears at full load works out to be 98.5% at 65° C, and the noise and vibration patterns correspond to VDI guidelines 2159 and 2056.

The casing of the gear box is of welded construction mainly in two parts. The bearing bores are machined with a high degree of accuracy on CNC machines. The external parts of multi-disc clutch are made of case hardened alloy steel. Toothings are case hardened and ground to quality 6 as per DIN 3961/63 with mean roughness value of  $R_a = 0.6 \mu\text{m}$ .

The hydraulic system mounted on gearbox is accurately designed with various alarms, controls and monitoring equipment for lubricating oil temperature and pressures.

The actuation of two multi-disc clutches for ahead and Astern motion takes place by means of pneumatically operated 4/3 way valve.

### Elecon Engineering Co. Ltd.

Post Box # 6, Anand - Sojitra Road,  
Vallabh Vidyanagar - 388 120,  
Gujarat, INDIA

Tele.: +91 2692 236 469 / 236 513

Fax: +91 2692 227 484

E-mail: [infogear@elecon.com](mailto:infogear@elecon.com)



For information  
and enquiry